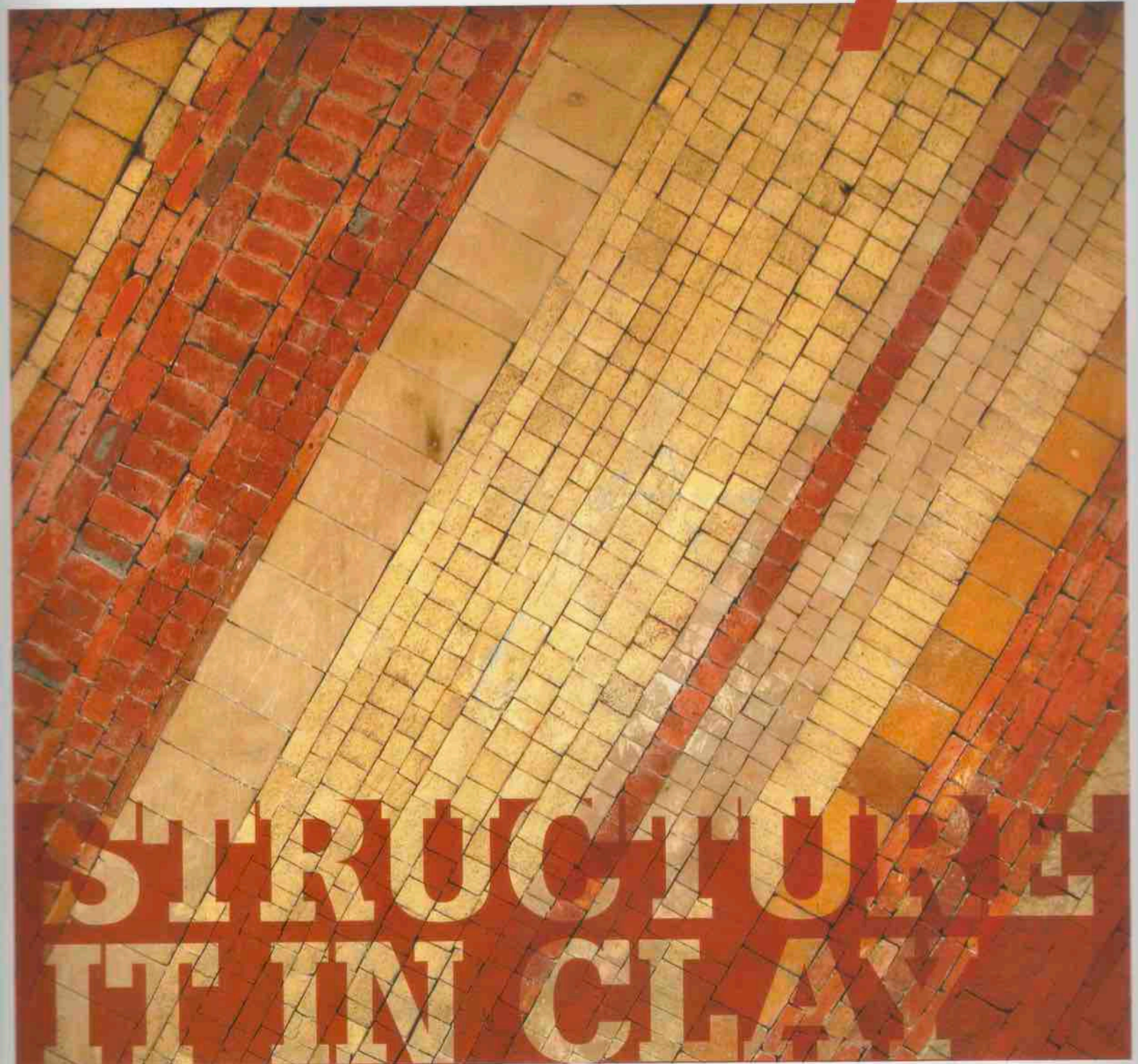


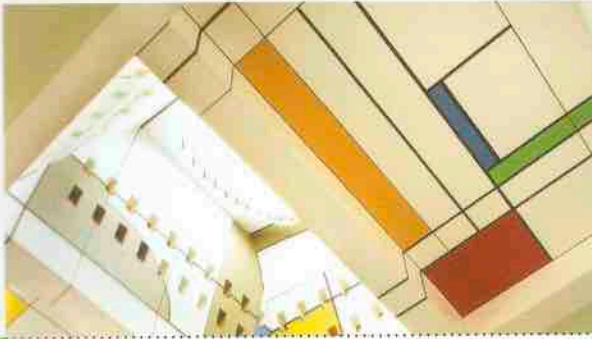
antarya



SPECIAL FEATURE
BRICK IT WITH
WIENERBERGER

MASTER STROKES
SHARAD KEMHAVI





24

MASTER STROKES
SHARAD KEMHAVI



28

YOUNG TURKS
DEEPAK SD, SUSHANT D S
GUNASHEKAR G, KIRAN NAYAK



32

CONVERSATIONS
MILIND NULKAR
SHIMUL JHAVERI KADRI



40

GREEN SENSE
STYLING IT TO NATURE
Khosla Associates



48

INNOVATIVE IDEAS
RECYCLE TO RESIDE
Priti Kalra



50

DESIGN CUES
STACKING IT MODULAR
Siddhika Sarda



52

ACADEMIA
AN ARCHITECTURAL PILGRIMAGE
Prof. M N Chandrashekhar, Prof. Smita M B

55

TRAINING THE ARCHITECT
Prof. Jaffer Khan AA Riba



56

DESIGN IDEOLOGY
SUSTAINABLE SENSUALITY
K Jaisim



58

DESIGN SPECTACLES
GEHRY – QUESTIONABLE DESIGN?
Yamini Kumar



60

GREEN RESORTS
TRADITIONAL FARE IN ABOUNDING GREENS



66

TRAVELOGUE
ON A TRAIL OF MUD
Mahesh Chadaga



11

74

HAPPENINGS



PURSuing A PASSION

DEEPAK SD, SUSHANT D S, GUNASHEKAR G

It is a team of three, all graduating from the prestigious RV College of Architecture in year 2009; their shared passion- design. **Deepak SD, Sushant DS, Gunashekar G**, all 28 years old, decided in February 2011 that having their own design firm would be the best way to give vent to their unquenchable passion for design, allow their creativity to manifest unhindered, pave the way to leave their indelible lines on the skyline in the coming decades.

Thus was born Black Box Design Studio, which now boasts of over 45 projects commissioned over the last four years with 18 of them having been completed. Contemporary with minimalist leanings being their strong inclination, the trio also firmly believe in incorporating green sensibilities to the maximum extent possible.

Interestingly, all three had dabbled in design informally even while being students, lending their design ideas to those who sought. It was thus not surprising that they were impatient to start a firm of their own where they could be the design masters.

One of their early projects is Gear International School where the existing building had to be restructured. The trio came up with a design where each activity was assigned a separate space with the classrooms built around a green belt. To prevent crowding, the classrooms were divided into clusters buffered in between by green spaces, *Jaali* walls and semi-transparent wall panel. The buffer space was assigned as activity centres for the classrooms.

"We recalled our school experiences and came up with a design that negated the common issues and problems that many schools face based on their design", says Deepak. Thus, ramps and lifts were provided for handicapped students with special toilets designed to address the needs of the physically challenged. The green element was brought in through use of stabilised mud blocks with the earth sourced from the site.

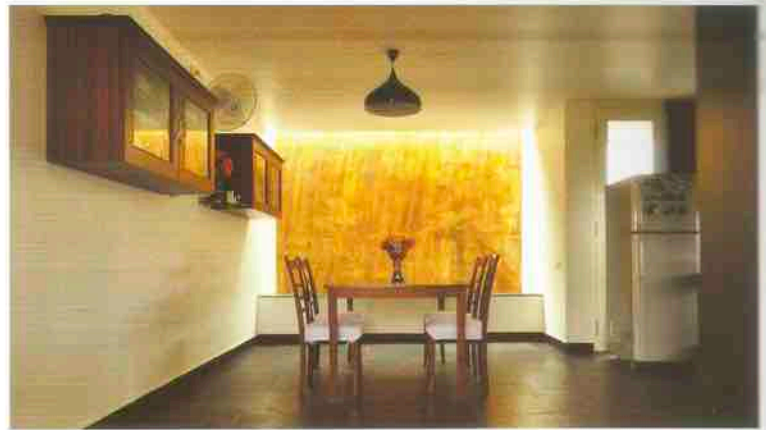
The basement, which conventionally calls for artificial lighting, was designed as a lower ground with the open courts bringing in natural light while open steps lead to the spaces. Interest on the façade was brought in by using the classroom grids as alternate solids and voids which also create interactive spaces.

The Sathish Residence is a contemporary structure, the interiors being white and pristine, exuding minimalist charm. Plenty of play of levels is evident while glass and wood find their way significantly in the interiors. Greenery prevails inside along with a Zen garden and water bodies with the living and bedroom spaces opening on to a sky lit courtyard. Visual connectivity between spaces is strong while the pristine white interiors along with the presence of glass lends a free flowing feel to the spaces, contrasted warmly by a fair infusion of wood.

The Krishna residence is a contemporary twist to a traditional thought process reflected as an inspiration from the Mysore Palace in terms of the water cascades, the segregation of public and private spaces. The play of materials in



Farqooia multi-speciality hospital



Elnathan residence

the façade and the presence of grandeur in the interiors again are reminiscent of the décor inclinations of the palace.

A suspended staircase prevails in another residential project, Kishan House. The beauty of the suspended staircase is accentuated by opting for Jaisalmar stone steps, contrasted with exposed concrete ceiling. Plenty of play of wood is evident in the interiors with the free flowing spaces teaming with a skylight and expansive open spaces to bring in natural light and ventilation. An element of shadow play is also brought in through the incorporation of trellis.

Natural elements and low cost materials find their way into another residential project, Elnathan residence. The contemporary styled four bedroom house is inspired from the local materials found in Kolar. Thus, Kota and Cuddapah stone find their way extensively to complement the earthy leaning of the décor.

The hospital project, Farqooia Institute Mysore, is designed to ensure high functional efficiency without sacrificing aesthetics. The spaces are expertly designed to ensure clear demarcation of

services while the flow of these services follows a logical pattern in the plan of the spaces. Thus, the emergency care unit has direct access from the road while consultation service areas are given secondary access. Each unit of service is aesthetically separated by a lush green landscape to bring in cheer as well as ensure a healthier interior with plenty of natural light and ventilation.



Sathish residence



Kishan residence



Krishna residence