

AUGUST 2013 ₹ 175

# ARCHITECTURE+DESIGN

AN INDIAN JOURNAL OF ARCHITECTURE

**“The architect is just one part of a huge machine...”**  
— *Ken Shuttleworth*

**MULTI-LEVEL DWELLINGS**



VOLUME 30 ISSUE 8



INR 175-A+D-AUG 2013



Project Features

# Climate Responsive Design





**Project:** S C Techno School, J P Nagar, Bangalore

**Architects:** BLACKBOX design studio, Banashankari, Bangalore

---



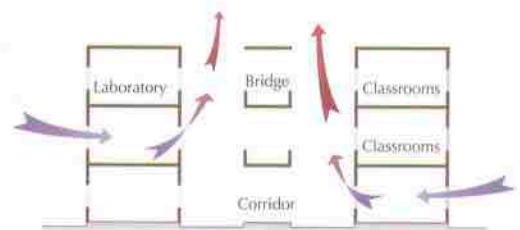




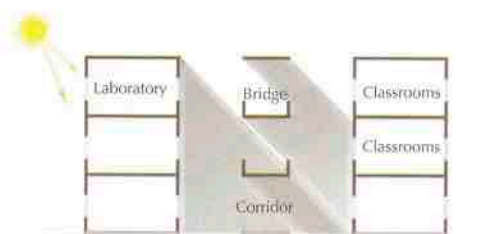
The dedicated site for the school is located at J P Nagar in Bangalore, which is about 22km away from the Central Business District. The site is 49m wide and 300m in length, which is about 14,700sq m of area. It is a dry narrow site with clean flat surface, surrounded by residential areas on all three sides and with a busy highway on the other side which adds noise to the surrounding. The site has two different approaches—the vehicular entry is planned through the busy highway and the pedestrian entry is through the residential area.

In consideration of noise and traffic both inside and outside of the site, the main school was pushed towards the rear side of the plot which further created a buffer space between the noisy traffic and the school.

The building is contextual in terms of orientation along with the site. The idea was to make the building more climate



THE LINEAR OPEN AREA IS SANDWICHED BETWEEN TWO FUNCTIONAL SPACES ACHIEVING HOT AIR ESCAPE

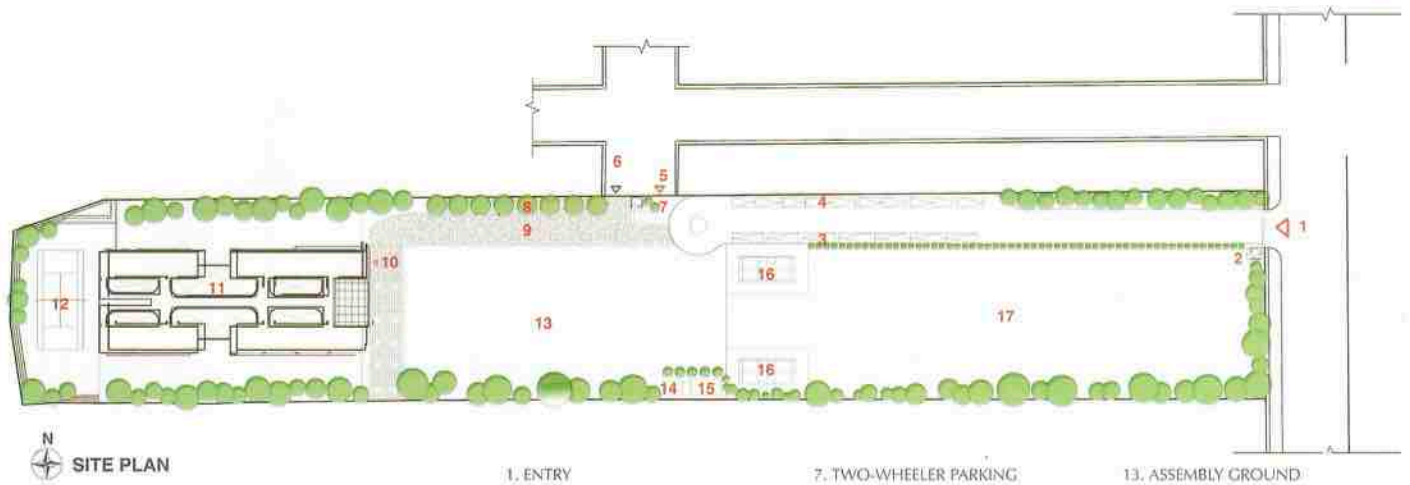


THE CLASSROOMS & CORRIDORS ARE WELL LIT & SHADED, WHICH COMPLETELY REDUCES THE USE OF ARTIFICIAL LIGHTING



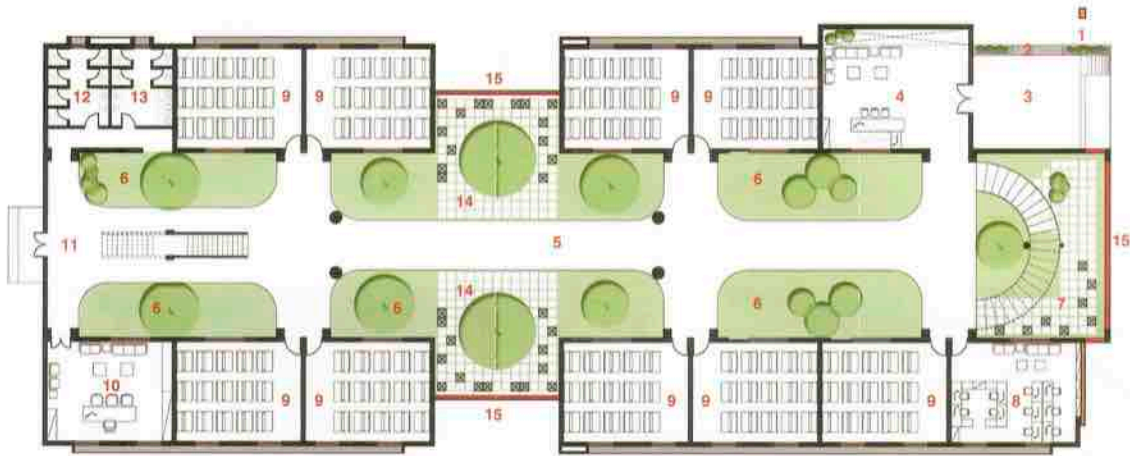
THE CENTRAL GREEN COURT SPACE ACTS AS A NOISE BUFFER

#### CLIMATIC ANALYSIS



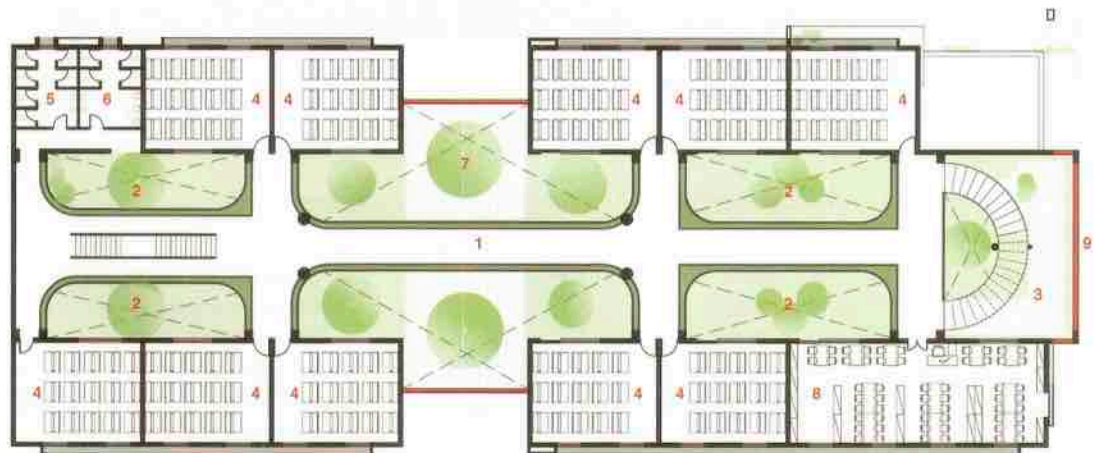
N  
SITE PLAN

- |                     |                        |                           |
|---------------------|------------------------|---------------------------|
| 1. ENTRY            | 7. TWO-WHEELER PARKING | 13. ASSEMBLY GROUND       |
| 2. SECURITY ROOM    | 8. BICYCLE PARKING     | 14. ELECTRICAL PANEL ROOM |
| 3. BUS PARKING      | 9. PATHWAY             | 15. TRANSFORMER YARD      |
| 4. CAR PARKING      | 10. MAIN ENTRANCE      | 16. BADMINTON COURT       |
| 5. VEHICLE ENTRY    | 11. SCHOOL BLOCK       | 17. PLAY GROUND           |
| 6. PEDESTRIAN ENTRY | 12. TENNIS COURT       |                           |



GROUND FLOOR PLAN

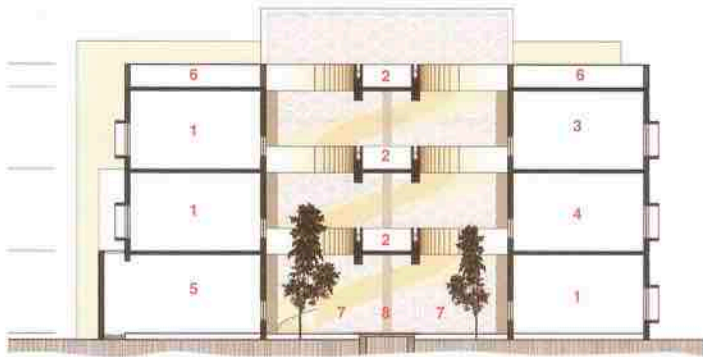
- |                |                      |                          |
|----------------|----------------------|--------------------------|
| 1. PLANTER BOX | 6. COURT             | 11. EMERGENCY EXIT       |
| 2. SEATER      | 7. WAITING LOUNGE    | 12. GIRLS TOILET         |
| 3. ENTRY LOBBY | 8. ADMINISTRATION    | 13. BOYS TOILET          |
| 4. RECEPTION   | 9. CLASSROOM         | 14. MULTI-ACTIVITY SPACE |
| 5. CORRIDOR    | 10. PRINCIPAL OFFICE | 15. JALI WALL            |



FIRST FLOOR PLAN

- |                 |                         |
|-----------------|-------------------------|
| 1. CORRIDOR     | 6. BOYS TOILET          |
| 2. COURT BELOW  | 7. MULTI-ACTIVITY SPACE |
| 3. SEATER       | 8. LIBRARY              |
| 4. CLASSROOM    | 9. JALI WALL            |
| 5. GIRLS TOILET |                         |



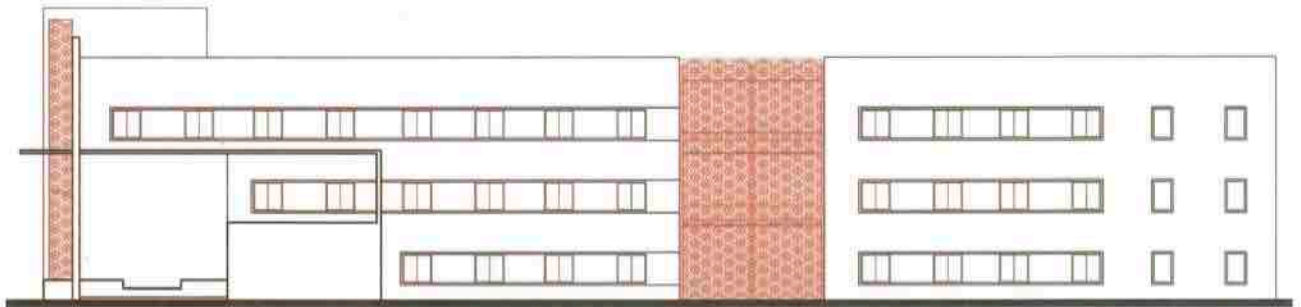


SECTIONS



1. CLASSROOM  
2. CONNECTING BRIDGE  
3. LABORATORY  
4. LIBRARY

5. RECEPTION AND WAITING LOUNGE  
6. TERRACE  
7. COURT  
8. CORRIDOR



ELEVATION



sensitive. The long spine of the building parallel to the east-west axis is broken into four different blocks, which further helped in getting maximum north light, so as to minimise the use of artificial lighting in the day time.

The movement between the blocks is embedded in a central tunnel space which was a major point in terms of wind flow. The functional spaces are connected with the bridges which is sandwiched between the green spaces, and also converts to a multi-functional spaces. The east, north and south facades are treated with fabricated *jaali* to bring a touch of playfulness of shadows inside the building. ☯

#### FactFile

**Client:** Vasanth Kumar

**Design team:** Guna, Deepak, Sushant (Principals), Raj (Project Architect)

**Consultants:** Brain Wave Consultants (MEP), Kalkura Associates (Structural)

**Contractors:** Vasanth Constructions

**Built-up area:** 3623sq m

**Cost of project:** Rs 6.5 crore

**Year of completion:** 2012